

PROPERTY REDUCTION AUCTION

SUNDAY, OCTOBER 3, 2010

SALE TIME: 12:00 P.M.

**LOCATION: 4/10 OF A MILE S. OF EUREKA FROM E. JUNCTION OF HWY. 10 & 47.
LUNCH PROVIDED BY CLYDE'S CHUCKWAGON • RESTROOM ON SITE**

HOUSEHOLD

FUTON
PORTABLE PODIUM
SHELVEING
TWIN BED, BOX SPRING AND MATTRESS W/
HEADBOARD
SMALL DRESSER AND 5 DRAWER OAK DRESSER
SET
DEEP FAT TURKEY FRYER-LIKE NEW
JVC STEREO SYSTEM-LIKE NEW
MICROWAVE STAND
STUDENT DESK
FULL SIZE BED WITH BOX SPRING / MATTRESS AND
HEADBOARD-CHERRY
MULTIPLE SMALL CHESTS OF DRAWERS
SMALL ROLL TOP DESK
BLACK END TABLE WITH GLASS TOP
OAK END TABLE
5 DRAWER DRESSER-WHITE
NEW WALNUT ENTERTAINMENT CENTER WITH
GLASS DOORS
OAK ENTERTAINMENT CENTER
OAK AMWAY
COMPUTER DESK
BURGANDY LEATHER LAZY BOY EASY CHAIR
AND MATCHING COUCH W/ RECLINING SEATS
GOLD VANITY RACK
2- 5 SHELF RIDGEWOOD BOOK CASES-STILL IN BOX
SET OF 4 KITCHENETTE CHAIRS
BLUE STRIPED CLOTH ROCKER
BAR STOOL
TAN CLOTH EASY CHAIR-LIKE NEW
ELECTRIC FIREPLACE
CARD TABLES
CORONADO BLACK AND WHITE 13" TV
CONTEC 5" COLOR TV-RADIO
SYMPHONIC 9" COLOR TV WITH VHS
EUREKA CANISTER VACUUM
NEW EUREKA UPRIGHT VACUUM-STILL IN BOX
AREA RUGS
FLOOR LAMPS
ITEMS TOO MISC. TO MENTION

MISC.

PICTURES
PRINTER
BIKES
CEILING FAN
WIRE SHELVEING
BEMIS HUMIDIFIER
SENTRY SAFE
SERVING TRAYS
TOILET SEATS
RECEIVER HITCHES
2-FIRESTONE TIRES
INTERSTATE BATT. 12V
DOORS, MISC. SCREEN AND WALK-IN
PROPANE TORCH KIT- NEW
GREEN HOUSE SHUTTERS- NEW
TRASH CAN LIDS- NEW
NEW HUFFY BASKETBALL BANKBOARD W/
HARDWARE
MISC. PLYWOOD AND PRESSED WOOD
PING PONG TABLES AND ACCESSORIES
SLATE PIECES FOR POOL TABLE
FOOSBALL TABLE-LIKE NEW
FISHING GEAR
AUTO FLOOR MATS

COFFEE MUG WARMER-NEW
REVOLVING LIGHTED CHRISTMAS TREE
BOOSTER PAC BATTERY CHARGER-LIKE NEW
NEW OPEN FACE AND CRESCENT WRENCHES
VARIOUS PRESSURE WASHERS

GUN

870 REMINGTON PUMP SHOTGUN
MISC. AMUNITION

LAWN AND GARDEN

YARD TRAILER
TOOLS
SCOTT GRASS SEEDER/ NEW IN BOX
PICNIC TABLE
GARDEN WIRE
BATTERY OPERATED WEED EATER
WEEDEATERS
AGRI-FAB- 8 H.P. CHIP-N-VAC, MODEL # 502492-LIKE
NEW
21" CRAFTSMAN MOWER BLADES-NEW
WIRE MESH UTILITY YARD TRAILER-NEW

APPLIANCES

MAYTAG PORTABLE AC UNIT
WHITE MAYTAG FRIDGE/FREEZER W/ EXTERIOR ICE
AND WATER
WHITE MAYTAG DISHWASHER
WHITE MAYTAG OVEN W/ RANGE

ANTIQUES AND COLLECTIBLES

FARMLAND INS. ELECTRIC SIGN
SUPER VALUE ELECTRIC SIGN
ADVERTISING AND COLLECTIBLE ITEMS
SEED CAPS-NEW
TIME INS. CLOCK
TORO SNOW PUP
LANTERNS
CROCKS
CYCLONE GRASS SEEDER
SAUSAGE STUFFER
NWB NEWSPAPERS 1920'S - 1960'S
STORAGE RACKS
DISTRIBUTOR CATALOGS FROM EUREKA
HARDWARE
FUSES
GLASS WINDOWS
POP CANS
CHILDRENS TOYS
ADVERTISING SIGNS FROM EUREKA HARDWARE
OLD CALENDERS AND BUSINESS SIGNS
PORTABLE HAND SPOTLIGHT
OLD 45 RPM RECORDS
OLD BOARD GAMES
OLD CHILDRENS TOYS
US POSTAL SCALE
RADIO FLYER RED WAGON

FARM

SQUARE BALES-APPROXIMATELY 300 ALF./ BROME
FROM 2008 (EAST OF OLD CATHOLIC CHURCH)
IN SW CORNER OF EUREKA-TO BE REMOVED BY
11-1-10
FARM KING 7" X 31" PTO GRAIN AUGER
HUTCHINSON 6" X 32" MOTOR DRIVEN GRAIN AUGER
KNIPCO HEATER
STEEL FENCE POSTS
CEMENT BLOCKS

OLD JD FEEDER WAGON, REAR UNLOAD-PTO DRIVE
NEW RUBBER, NEW PAINT
TRAC BUSTER
JD HYD. CYLINDER
JD QUIKTACH
FUEL SERVICE TANKS
LOG CHAIN
JACK
FORNEY WELDER
WATER PRESSURE TANK
SET OF 4 GOODYEAR WRANGLER LJ-225 75R16
JACUZZI WATER PUMP W/ MAGNETEK
1 H.P. PUMP MOTOR

LOTS FOR SALE IN EUREKA SD

NORTH 42' OF LOT 1 OUTLOT 1 AND LOT 2A OUTLOT
1, DELZER'S 1ST ADDITION, EUREKA CITY. (SE
OF KAPPES TRUCKING LOT) TAXES: \$25.73 AND
\$22.80

VEHICLES



PONTIAC SOLSTICE-2007, 1 OWNER, CONVERTIBLE,
BLACK LEATHER INTERIOR, MINT FACTORY
CONDITION, 6350 MILES, LOADED...NO LONGER
IN PRODUCTION



LINCOLN AVIATOR-2005, 109,556 MILES, ALL NEW
MICHELIN TIRES INCLUDING SPARE, HAS ALL
FEATURES EXCEPT SUNROOF, INCLUDES
TOWING PACKAGE WITH INTERIOR BRAKE,
CAMEL LEATHER INTERIOR



SUZUKI SAVAGE CYCLE-1986, 5485 MILES, 650 CC,
NEW PIPES, NEW WINDSHIELD, NEW BATTERY

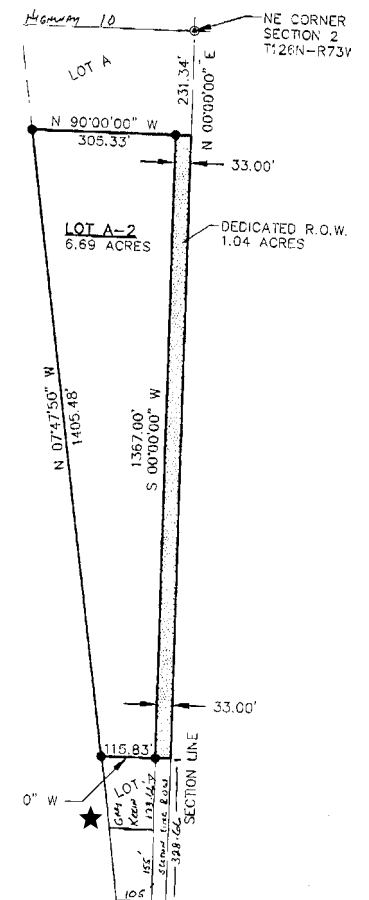


ALUMA TRAILER-2009, 16' PULL TYPE TRAILER, CAN
BE SETUP TO HAUL 3 CYCLES. SLIGHT HAIL
DAMAGE, ONE OWNER

MACHINE SHED AND REAL ESTATE



EUREKA CITY UNPLATTED ADDITION. A PORTION
OF LOT A IN THE NE 1/4-2-126-73 LYING SOUTH
OF LOT A- 2 OF LOT 2 UNPLATTED WITH 50' X 82'
BUTLER MACHINE SHED. ALL STEEL, EXCELLENT
CEMENT FLOOR. 12' WIDE DOOR, 13' CLEARANCE
TAXES: \$395.42. POSSESSION AT CLOSING.



TERMS OF REAL ESTATE SALES

25% DOWN DAY OF SALE. BALANCE DUE AT CLOSING, APPROXIMATELY 30 DAYS FROM DAY OF SALE.
SELLER TO PAY 100% OF 2010 TAXES. ALL OTHER COSTS SUCH AS DEED PREPARATION AND TITLE
INSURANCE TO BE SPLIT EQUALLY BETWEEN BUYER AND SELLER.

AUCTIONEER'S NOTE: THIS SALE SPEAKS FOR ITSELF. A CONSIDERABLE AMOUNT OF NEW OR
NEARLY NEW ITEMS WILL BE OFFERED. VEHICLES ARE IN EXTRAORDINARY CONDITION. WOULD
BE HARD TO FIND A PONTIAC SOLSTICE COMPARABLE IN THE MIDWEST. BE ON TIME - SALE WILL
START PROMPTLY AT NOON.

ORDER OF SALE - APPROXIMATE TIMES:
GENERAL & COLLECTIBLES 12 PM TO 2:30 PM
SQUARE BALES AND FARM ITEMS 2:30 PM TO 3 PM
VEHICLES 3 PM TO 3:30 PM • REAL ESTATE 3:30 PM TO 4 PM

GARY E. & NANCY D. KREIN, OWNERS

Contact Gary E. Krein: 605-284-5217 or 877-258-7215

DONALD W. KALLENBERGER - BROKER
LIC. #13866
JOHN G. THURN - BROKER
LIC #3812
GARY E. KREIN - BROKER ASSOC.
LIC #11617

TERMS: CASH. (SOUTH DAKOTA SALES TAX WILL APPLY.)
NO PROPERTY WILL BE REMOVED UNTIL SETTLED FOR.
NOT RESPONSIBLE FOR ACCIDENTS.
SALE BILL ON WEBSITE: www.northcentralservice.com

AUCTIONEER:
MIKE RAILE, LIC. #322 • PH. 605/284-2972 • EUREKA, SD 57437

CLERK:
EUREKA REALTY COMPANY
PH. 605/284-5121
PH. 605/284-2315 OR
605/285-6611
PH. 605/284-5217 OR
877-258-7215
EUREKA, SD 57437