



# HOUSEHOLD AUCTION

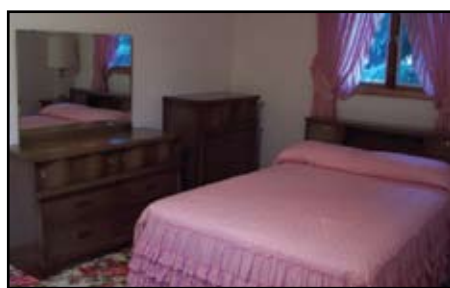
**SUNDAY, JUNE 6, 2010**  
**SALE TIME: 12:00 P.M.**

**LOCATION: 304 12TH STREET • EUREKA, SD**  
**LUNCH SERVED BY CLYDE'S CHUCK WAGON**



### **FURNITURE**

3 PC. BEDROOM SET - DARK  
 TABLE LAMPS  
 WOOD CHAIR - CLOTH ON SEAT  
 QUEEN SIZE BED  
 LAMPS  
 RUST COLOR CHAIR  
 MIRROR AND CABINET  
 SOLID OAK HUTCH - LIGHTED  
 DINING TABLE WITH 2 LEAVES -  
 OAK  
 BALDWIN ORGAN FANFARE  
 DELUXE (FUN MACHINE)  
 PIANO LAMP  
 BLUE MASTERCRAFT RECLINER  
 WINE COLOR MASTERCRAFT  
 RECLINER  
 BROWN TWEED MASTERCRAFT  
 COUCH  
 END TABLE - TELL CITY  
 POLE LAMP  
 SHELVING UNIT ENTERTAINMENT  
 CENTER  
 COFFEE TABLE - GLASS TOP  
 CHEST - CEDAR  
 COMPUTER DESK  
 DESK SURROUND - WOOD  
 KITCHEN TABLE - (1950'S)  
 BAKER'S RACK



BLACK TV STAND  
 TAN VIDEO CHAIR  
 BUNCHER TABLE  
 FUTON

### **APPLIANCES**

WHITE AMANA REFRIGERATOR  
 WHITE GIBSON CHEST FREEZER  
 WHITE WASHER/ DRYER-  
 FRIGIDAIRE ESTATE  
 MAYTAG WRINGER WASHER  
 ROPER ELECTRIC RANGE -  
 LIKE NEW

### **DISHES/KITCHEN**

12 PC. OF NORITAKE CHINA  
 JARS  
 18 QT. ROASTER/OVEN  
 A LOT OF KITCHENWARE  
 9- ENGLISH BONE CHINA CUP  
 AND SAUCER SETS  
 16 QUART ELECTRIC ROASTER-  
 BRAND NEW, NEVER USED  
 BLACK AND DECKER SPACE  
 SAVER COFFEE MAKER -  
 LIKE NEW

### **MISC.**

JANOME SEWING MACHINE - NEW  
 BEDDING  
 VCR  
 AIRDYNE SCHWINN EXERCISE  
 BIKE  
 2- 19" TVS  
 25" COLOR TV  
 ROUND CARD TABLE W/ 4 CHAIRS  
 SCHWINN TWIN BIKES  
 STEEL SHELVING (4) UNIT



DEHUMIDIFIER  
 FAX MACHINE  
 2- EDEN PURE HEATERS  
 TURN TABLE STEREO W/  
 SPEAKERS  
 ICE AUGER- SPORTSMAN  
 KIRBY VACUUM W/  
 ATTACHMENTS- LIKE NEW  
 PAPER SHREDDER  
 FANS  
 WOOD BURNER - BRICK LINED  
 POOL TABLE - SMALL  
 4 - BIKES  
 2 - KEROSENE HEATERS  
 CAMPING STOVE  
 3500 WATT GENERATOR  
 ELECTRIC ICE CREAM FREEZER-  
 LIKE NEW  
 20 GAL. CREAM CAN THAT WAS  
 ROSMALLED  
 PLAY WAGON IN GOOD  
 CONDITION  
 PLAY WAGON W/ EXTENDED SIDE  
 BOARDS - LIKE NEW  
 SHELVING UNIT  
 BROTHER FAX MACHINE - IN  
 GOOD WORKING CONDITION  
 SAMSONITE SUITCASES  
 ITEMS TO NUMEROUS TO  
 MENTION

### **LAWN & GARDEN**

PATIO SET W/ 4 CHAIRS  
 CHARBROIL GRILL - GAS  
 SNOW BLOWER MTD  
 FISHING SUPPLIES  
 SHOP EQUIPMENT  
 8' ALUMINUM LADDER



5" ALUMINUM LADDER  
 SNAPPER LAWN MOWER - 21"  
 CUT, 5.5 H.P.  
 WEED TRIMMER - GAS  
 GARDEN SEEDER

### **ANTIQUES & COLLECTIBLES**

ROUND ANTIQUE TABLE WITH  
 2 CHAIRS  
 BIRTHING CHAIR  
 TABLE  
 STUDEBAKER WAGON  
 2 SCHOOL DESKS  
 ROUND TABLE  
 WRINGER  
 WASHBOARD  
 KEROSENE STOVE W/  
 OVEN- 4 BURNER  
 CAST IRON KETTLE  
 CROCKS- 10 GAL. AND 3 GAL.  
 TOOLS  
 GLASSWARE - FENTON  
 FENTON GLASSWARE, PLATES &  
 GOBLETS  
 8 PIECE DISH SET - GREEN

### **GUN**

FIELD MASTER 12 GAUGE  
 SHOTGUN IN GOOD CONDITION  
 - MODEL 30

### **VEHICLE**

2000 BUICK LESABRE - 58,291  
 MILEAGE, ELEC. SEATS, WIN-  
 DOWS AND DOORS, AC, 4  
 DOOR, POWER LOCK, KEYLESS  
 ENTRY, 6 CYLINDERS, FULLY  
 LOADED

**AUCTIONEER'S NOTE:** The first sale of the season offers a great line of quality furniture, antiques and collectibles and a clean vehicle.  
 All merchandise is clean and ready to go.

**REINHOLD AND EVANGELINE SCHUMACHER, OWNERS**  
**CONTACT: NINA KUNZ AT 605-577-6250 • JAMES SCHUMACHER at 605-577-6294**

DONALD W. KALLENBERGER - BROKER  
 LIC. #13866  
 JOHN G. THURN - BROKER  
 LIC #3812  
 GARY E. KREIN - BROKER ASSOC.  
 LIC #11617

TERMS: CASH. (SOUTH DAKOTA SALES TAX WILL APPLY.) NO PROPERTY  
 WILL BE REMOVED UNTIL SETTLED FOR.  
**NOT RESPONSIBLE FOR ACCIDENTS.**  
 SALE BILL ON WEBSITE: [www.northcentralservice.com](http://www.northcentralservice.com)

**AUCTIONEER:**  
 MIKE RAILE, LIC. #322 • PH. 605/284-2972 • EUREKA, SD 57437

**CLERK:**  
 EUREKA REALTY COMPANY  
 PH. 605/284-5121  
 PH. 605/284-2315 OR  
 605/285-6611  
 PH. 605/284-5217 OR  
 877-258-7215  
 EUREKA, SD 57437